



WOMEN'S GYMNASTICS

# OKLAHOMA

## MEET 7 - NO. 2 OKLAHOMA AT NO. 17 MISSOURI

Feb. 19 | 6:30 P.M. (CT) | Hearn Center | Columbia, MO.

Phillip Rogers, Women's Gymnastics Communications  
180 W. Brooks, Suite 2525, Norman, OK 73019  
O: (405) 325-8413 | C: (405) 880-0794 | F: (405) 325-7623  
philliprogers@ou.edu | www.SoonerSports.com



Live Stats: ..... www.mutigers.com  
Television ..... Metro Sports (tape delayed - TBA)  
Tickets ..... 1-800-CAT-PAWS  
Ticket Price ..... \$5 Adult ; \$3 Youth/Senior



### OKLAHOMA SOONERS (9-0, 2-0 BIG 12)

2010 TROESTER RANKINGS  
Team: 196.563 (2nd)  
Vault: 49.117 (6th) | Bars: 49.171 (2nd)  
Beam: 49.067 (2nd) | Floor: 49.208 (1st)

### MISSOURI TIGERS (7-1, 1-1 BIG 12)

2010 TROESTER RANKINGS  
Team: 195.025 (17th)  
Vault: 48.950 (16th) | Bars: 48.767 (17th)  
Beam: 48.604 (15th) | Floor: 48.704 (22nd)

### AT A GLANCE:

The second-ranked OU women's gymnastics squad wraps up its Big 12 regular season slate at No. 17 Missouri on Friday at 6:30 p.m. (CT). Oklahoma dropped to No. 2 in the latest Troester rankings released Monday despite posting its highest score since 2004 in its 197.250-196.225 "Beauty and the Beast" victory over No. 16 Iowa State on Feb. 12. The Sooners hold a season average of 196.563, just behind top-ranked Alabama's 196.575 average through the first six weeks of competition.

Oklahoma holds the best season average of all four Big 12 squads on every apparatus, while the Sooners hold the top mark in the individual standings on every event but vault. Sophomore All-American Megan Ferguson is the highest ranked Big 12 gymnast on any apparatus with her second-place standing on beam (9.888). Hollie Vise remained perfect on bars this season with her sixth consecutive win on the apparatus against the Cyclones, positioning herself fourth in the country with a 9.896 average. Natasha Kelley also pushed into the top 15 nationally on bars with her current 11th-place showing (9.863). Jackie Flanery is ranked No. 13 on floor in this week's ranking with a season average of 9.871.

Missouri improved to 7-1 on the year with a Valentine's Day 195.000-189.800 victory at Centenary. The Tigers are led by Sarah Shire, who won the 15th all-around title of her career last weekend. Shire is currently ranked 18th nationally in the all-around with a season average of 39.167.

### ON THE WEB

OU's home meets can be seen via a live web cast with commentary from Sooner All-American Kasie Tamayo and Ashley Alden on Oklahoma All-Access, SoonerSports.com's premium site. Live stats for all meets can be found on SoonerSports.com.

### TICKETS

For home meet tickets, call (405) 325-2424 or toll-free (800) 456-GoOU. Tickets can also be purchased at the main ticket office in Gaylord Family-Oklahoma Memorial Stadium or at Lloyd Noble Center on the day of the meet.

### PRACTICE POLICY

Practices have resumed at the Sam Viersen Center, directly north and across the street (Imhoff) from the Lloyd Noble Center. Practices are typically open to media. However, those who wish to attend must obtain clearance through Phillip Rogers in the OU Athletics Communications Office prior to the start of practice. Practice generally runs from 10:30 a.m. to 2:30 p.m. The best time to conduct interviews is immediately following practice.

### CREDENTIAL REQUESTS

Media credentials for home contests at the Lloyd Noble Center should be requested no later than one day prior to the event. All requests should be directed to Phillip Rogers in the Communications Office at (405) 325-8413 or by e-mail to philliprogers@ou.edu.

### POST-MEET INFORMATION

Post-meet interviews will take place on the main floor of the Lloyd Noble Center after head coach K.J. Kindler dismisses her athletes. Official score sheets will be available at the scorer's table.

### MEDIA INTERVIEWS

Non-postmeet interview requests for athletes and coaches must be arranged through Phillip Rogers in the Athletics Communications Office. All requests should be submitted at least one day in advance of the desired interview time.

DATE	OPPONENT	LOCATION	TIME/RESULT
1.8	FLORIDA	LLOYD NOBLE CENTER	(W) 196.250-195.275
1.15	@ Auburn	Auburn, Ala.	(W) 196.300-195.325
1.23	@ Illinois	Champaign, Ill.	(W) 196.650-194.425
1.30	Metroplex Challenge	Dallas, Texas	(W) 196-100-194.875
2.5	NEBRASKA / TWU	LLOYD NOBLE CENTER	(W) 196.825-196.225
2.12	IOWA STATE	LLOYD NOBLE CENTER	(W) 197.250-196.225
2.19	@ Missouri	Columbia, Mo.	6:30 p.m.
2.26	@ Michigan State	East Lansing, Mich.	6 p.m.
3.5	ALABAMA	LLOYD NOBLE CENTER	7 P.M.
3.12	WASHINGTON	LLOYD NOBLE CENTER	7 P.M.
3.19	@ Arkansas	Fayetteville, Ark.	7 p.m.
3.27	Big 12 Championships	Lincoln, Neb.	2 p.m.
4.10	NCAA Regionals	TBA	TBA
4. 22-24	NCAA Championships	Gainesville, Fla.	TBA



The official site of OU Athletics supplies Sooner fans worldwide with the latest news and features on Oklahoma athletics direct from Norman. The site provides the latest press releases, rosters, bios, schedules, statistics, notes, quotes and photo galleries available to both Sooner fans and the media.

NAME	HEIGHT	YEAR	HOMETOWN (HIGH SCHOOL)	CLUB	PRONUNCIATION
Cindell, Candace	5-5	Jr.	Frisco, Texas (Frisco HS)	Kurt Thomas Gymnastics	sin-DELL
Ferguson, Megan	4-11	So.	Olathe, Kan. (Blue Valley HS)	Eagles Gymnastics	
Flanery, Jacqueline	5-5	Sr.	Plattsburg, Mo. (Plattsburg HS)	Eagles Gymnastics	
Kelley, Natasha	5-4	R-Fr.	Katy, Texas (Home schooled)	Cypress Academy	
Kramer, Julie	5-2	Sr.	Uvalde, Texas (Baylor Univ. / Uvalde HS)	Acrotex Gymnastics	
Mantle, Mary	5-4	Sr.	Ft. Collins, Colo. (Rocky Mountain HS)	GK Gymnastics	
Neubauer, Bethany	5-2	Fr.	Edmond, Okla. (Edmond North HS)	Dynamo Gymnastics	
Nowak, Kayla	5-2	Fr.	Algonquin, Ill. (Huntley HS)	Illinois Gymnastics Institute	no-VAK
Olson, Brie	5-2	Fr.	St. Cloud, Minn. (Rocori HS)	Ultimate Gymnastics	BREE
Ramaswami, Nitya	5-4	Fr.	Ames, Iowa (Ames HS)	Success Gymnastics	knih-t-YUH ROM-uh-swam-ee
Ratcliff, Natalie	5-5	Jr.	Overland Park, Kan. (Blue Valley Northwest HS)	GAGE	
Root, Melanie	5-3	Jr.	Cartersville, Ga. (Cartersville HS)	Cartersville Twisters	
Smith, Kristin	5-3	Sr.	Oklahoma City, Okla. (Putnam City HS)	Dynamo Gymnastics	
Stone, Sara	5-4	So.	Dallas, Texas (Spring Creek Academy)	Metroplex Gymnastics	
Vise, Hollie	5-5	Sr.	Dallas, Texas (Spring Creek Academy)	WOGA	VICE

### COACHING STAFF

K.J. Kindler – Head Coach (Fourth Year) | Lou Ball – Assistant Coach (Fourth Year) | Tom Haley – Assistant Coach (Fourth Year)



CANDACE **CINDELL**



MEGAN **FERGUSON**



JACKIE **FLANERY**



NATASHA **KELLEY**



JULIE **KRAMER**



MARY **MANTLE**



BETHANY **NEUBAUER**



KAYLA **NOWAK**



BRIE **OLSON**



NITYA **RAMASWAMI**



NATALIE **RATCLIFF**



MELANIE **ROOT**



KRISTIN **SMITH**



SARA **STONE**



HOLLIE **VISE**

## GYMNAST TO WATCH:

### SARA STONE



Stone returned from an ankle sprain that kept her out of the floor lineup the first five meets of the year with a 9.85 in her season debut on the apparatus in last week's "Beauty and the Beast" meet. The sophomore gymnast showed glimpses of her potential on floor last season, posting a 9.825 in OU's regular season trip to Alabama and a 9.85 in the Sooners return to Tuscaloosa just two meets later for the NCAA Northeast Regional Championship. An already potent vaulter, Stone has posted at least a 9.8 on the apparatus in 18 of 19 career appearances.

## KNOW THE FOE

Missouri returns seven letterwinners from last season's group that finished the 2009 campaign with a 20-6 record and a No. 13 final ranking. The Tigers are 3-0 at home this season, averaging a 195.417 at the Hearnes Center in Columbia, Mo., in 2010.

Missouri's only home meeting with a top 25 opponent came in a 196.400-196.000 victory over then-No. 17 Iowa State on Jan. 22. The victory over the Cyclones was one of three wins this season over top-25 opponents for the Tigers, who bested No. 14 Kentucky and No. 16 LSU at the Lady Luck Invitational in Las Vegas on Jan. 16.

The Sooners have won the last 12 meetings with MU. The Tigers last victory in the series came on Feb. 29, 2004 in a 197.000-196.650 win in Columbia, Mo. Missouri's final tally was its fourth highest in program history.

## REGULAR SEASON SENSATIONS

Oklahoma is 50-6 in the regular season under K.J. Kindler, including a perfect 9-0 mark in 2010. The Sooners went 10-4 during the regular season in 2009, with three of those losses coming on the road (Florida, Nebraska and Alabama).

## INDIVIDUAL STANDOUTS

Individually, the Sooners have a gymnast ranked in the top 15 on three of the four events. Sophomore All-American Megan Ferguson is the highest ranked Big 12 gymnast on any apparatus with her second-place standing on beam (9.888). Hollie Vise remained perfect on bars this season with her sixth consecutive win on the apparatus against the Cyclones, positioning herself fourth in the country with a 9.896 average. Natasha Kelley also pushed into the top 15 nationally on bars with her current 11th-place showing (9.863). Jackie Flanery is ranked No. 13 on floor in this week's ranking with a season average of 9.871.

## HOME SWEET HOME

The Sooners are 26-2 in Norman under fourth-year head coach K.J. Kindler. OU's only two losses at home have come against SEC opponents in Alabama and Arkansas. Top-seeded Alabama knocked off the Sooners en route to the NCAA South Central Regional title in 2008, while OU's loss to Arkansas in the 2009 home opener marked Oklahoma's only regular season home defeat in Kindler's tenure.

Among the 55 home wins since 2000 are notable victories over Auburn, Georgia, Florida, Illinois, Iowa State, Missouri, Nebraska, Penn State, Stanford and West Virginia.

## BUT THE ROAD ISN'T BAD EITHER...

The Sooners seek some of the same road success in 2010 that they have exhibited in recent years. On the young season, two of Oklahoma's top four scores have come in road competition, including a 196.650 at No. 25 Illinois. Five of OU's top seven scores (including a season-high 197.175 at TWU) came away from Norman in 2009, a year after five of Oklahoma's top seven scores (including three of the top four and a season-best-tying 196.750 at Arkansas) came on the road. Oklahoma was the only squad in the top 10 to have both of its top two scores from 2009 come in road competition. OU's 197.175-189.600 victory at TWU last season marked its best team score since Jan. 24, 2004 (197.300).

## TOPS IN THE CONFERENCE

Oklahoma holds the best season average of all four Big 12 squads on every apparatus, while the Sooners hold the top mark in the individual standings on every event but vault. The back-to-back Big 12 Champions are 18-2 against conference opponents under K.J. Kindler, including a 10-1 mark during the regular season.

## MILESTONE MOMENT

Oklahoma ascended to No. 1 nationally in the Troester rankings released Jan. 8, marking the first time in the program's 30-year history that the Sooners have accomplished the feat. OU overtook Alabama in the poll, marking the first women's sport at Oklahoma to be ranked No. 1 during the regular season. Women's gymnastics joins baseball, football, men's basketball, men's golf, men's gymnastics, softball and wrestling as the eight OU sports to achieve a No. 1 ranking.

The back-to-back Big 12 Champions are the first conference squad to be ranked No. 1 in the country since Nebraska held the top spot for one week of the 2005 season (Feb. 28, 2005 poll).

## CURRENT RANKINGS:

RANK	TEAM	AVERAGE	HIGH	RQS
1	Alabama <sup>^</sup>	196.575	197.450	196.400
<b>2</b>	<b>OKLAHOMA</b>	<b>196.563</b>	<b>197.250</b>	<b>196.425</b>
3	Oregon State	196.129	196.725	-
4	Florida <sup>^</sup>	196.117	196.725	195.995
5	Utah	196.088	196.550	195.995
6	Arkansas <sup>^</sup>	196.079	197.025	195.890
7	Georgia	195.996	197.200	195.755
8	Stanford	195.983	196.650	195.850
9	UCLA	195.982	196.725	196.145
10	Nebraska <sup>^</sup>	195.721	196.475	195.570
11	LSU	195.563	196.475	-
12	Auburn <sup>^</sup>	195.413	196.425	195.210
13	Penn State	195.379	196.450	195.165
14	Kentucky	195.338	195.550	195.295
15	Iowa State <sup>^</sup>	195.271	196.225	195.080
16	Michigan	195.208	196.400	194.970
17	Missouri <sup>^</sup>	195.025	196.400	194.750
18	Denver	194.596	195.575	194.400
19	Southern Utah	194.585	195.275	-
20	Illinois <sup>^</sup>	194.568	196.275	194.570
21	Arizona	194.363	195.675	194.100
22	Michigan State <sup>^</sup>	194.339	195.500	194.305
23	Washington <sup>^</sup>	194.213	195.425	-
24	Arizona State <sup>^</sup>	194.204	195.700	193.905
25	N.C. State <sup>^</sup>	194.140	194.875	-

<sup>^</sup> — Denotes OU's regular season opponents.

*The Sooners face 10 squads ranked in the preseason top-25 coaches poll, including three ranked in the top 10.*

## GYMINFO RANKING SCHEDULE:

Through Feb. 8, the teams are ranked by total season average. Beginning Feb. 15, the ranking is done by Regional Qualifying Score which consists of a team's three highest road scores and the next three highest scores. The high score is subtracted from the six event totals and the remaining amount is divided by five.

## QUICK FACTS:

### GENERAL INFORMATION

Location .....	Norman, Okla.
Enrollment .....	30,092
Founded .....	1890
President .....	David L. Boren
VP/Athletics Director .....	Joe Castiglione
Nickname .....	Sooners
Colors .....	Crimson & Cream
Conference .....	Big 12
Arena .....	Lloyd Noble Center
Capacity .....	12,000

### TEAM INFORMATION

2009 Overall Record .....	19-14
2009 High Score .....	197.175 (@TWU — 1.17.2009)
Big 12 Finish .....	First
NCAA Finish .....	10th
Letterwinners Returning/Lost .....	10/4
All-Americans Returning/Lost .....	1/0

### COACHING STAFF

Head Coach .....	K.J. Kindler
Year .....	Fourth Season
Alma Mater .....	Iowa State, 1992
Record at OU .....	.65-33-2*
Career Record .....	123-59-3*
Assistant Coach .....	Lou Ball
Year .....	Fourth Season
Alma Mater .....	Iowa State, 1999
Assistant Coach .....	Tom Haley
Year .....	Fourth Season

Women's Gymnastics Office Phone .....	(405) 325-6876
Women's Gymnastics Office Fax .....	(405) 325-8337

\* Entering the 2010 season

## MARCH-IN ORDER:

NAME	HEIGHT	YEAR	HOMETOWN
Neubauer, Bethany	5-2	Fr.	Edmond, Okla.
Nowak, Kayla	5-2	Fr.	Algonquin, Ill.
Olson, Brie	5-2	Fr.	St. Cloud, Minn.
Ramaswami, Nitya	5-4	Fr.	Ames, Iowa
Kelley, Natasha	5-4	R-Fr.	Katy, Texas
Ferguson, Megan	4-11	So.	Olathe, Kan.
Stone, Sara	5-4	So.	Dallas, Texas
Cindell, Candace	5-5	Jr.	Frisco, Texas
Ratcliff, Natalie	5-5	Jr.	Overland Park, Kan.
Root, Melanie	5-3	Jr.	Cartersville, Ga.
Flanery, Jacqueline	5-5	Sr.	Plattsburg, Mo.
Kramer, Julie	5-2	Sr.	Uvalde, Texas
Mantle, Mary	5-4	Sr.	Ft. Collins, Colo.
Smith, Kristin	5-3	Sr.	Oklahoma City, Okla.
Vise, Hollie	5-5	Sr.	Dallas, Texas

## BARS STARS

Every Oklahoma gymnast in the bar lineup against Iowa State set or tied a career high. The Sooners posted a 49.425 on the apparatus, marking their third different event to record a score of at least 49.400 on this season. OU, Alabama and Georgia are the only three teams in the country that have scored at least a 49.400 on three different events in 2010.

It was the second week in a row that the Sooners have had at least four gymnasts set a career high during a single rotation as OU had four gymnasts in the floor lineup accomplish the feat against Nebraska and TWU.

## IN ELITE COMPANY

The Sooners are one of just six squads to advance to the NCAA Championships every year since 2004, joining Alabama, Florida, Georgia, LSU and Utah on that elite list. OU's six championship appearances in the last six years matches the other three Big 12 programs combined during that period. Nebraska advanced to the NCAA Championships from 2004-07, while Iowa State made back-to-back appearances in 2005 and 2006 under K.J. Kindler.

## NO "I" IN TEAM

OU has found a way to win despite the lack of a true all-around presence. Oklahoma's only all-around competitor this season was Kayla Nowak against Illinois, while the Sooners were the only squad ranked in the final 2009 top-15 GymInfo poll without a gymnast in the top-25 all-around rankings.

Nowak was a last-minute addition to the vault lineup at Illinois and placed second in her first collegiate all-around appearance.

## MORE ON THE TEAM APPROACH

In OU's six meets this season, it has had five different gymnasts post the team's highest score on vault, four on bars, three on beam and two on floor. In all, nine different Oklahoma gymnasts have at least tied for OU's highest score on an event during a meet this season.

## DAZZLING DEBUT

Forty-seven of Oklahoma's 144 routines this season have been performed by freshmen (.326), including exactly half of OU's uneven bars routines (18 of 36). The group is 46-of-47 on the year. Each freshman that has competed has scored at least a 9.8 in one of their routines, while Natasha Kelley has already tallied 12 scores of at least 9.85.

## RACKING UP THE TITLES

The Sooners have collected 41 of a possible 48 combined individual and team event titles in 2010, including at least six combined individual and team event wins in each meet. OU has won every team event title on bars and floor in 2010.

## SOONER "FLOOR" COMPETITION

OU posted its highest event score on any apparatus under Kindler with a 49.600 on the floor exercise against Nebraska. The Sooners closed the rotation with five scores of 9.9 or higher. Oklahoma picked up career highs from Kristin Smith (9.95), Kayla Nowak (9.925), Hollie Vise (9.925) and Megan Ferguson (9.9), while Flanery sealed the win with a 9.9 in the final routine of the night.

## BEAM QUEENS

Just like last season's second road meet of the season, the OU beam squad provided its breakout performance of the 2010 campaign in its second road outing at Illinois with a team tally of 49.500 on the apparatus. OU reeled off five straight 9.85s or better after a fall from the first position on beam at Illinois. Vise and Smith shared event honors with 9.95s, while Ferguson (9.9), Kelley (9.85) and Nowak (9.85) completed a sweep of the individual event standings on the apparatus.

Oklahoma's beam tally was its second highest event total on the apparatus under Kindler, just behind OU's 49.525 on beam at TWU on Jan. 17, 2009.



## K.J. KINDLER

Head Coach | Fourth Season

### COACHING EXPERIENCE

- Head Coach (Oklahoma, 2006-Present)
- Head Coach (Iowa State, 2001-2006)
- Assistant Coach (Iowa State, 1992-2001)

### CAREER COACHING HIGHLIGHTS

- Coached Oklahoma to sixth straight NCAA Championships appearance in 2009
- Guided freshman Megan Ferguson to All-America status on beam in 2009
- Led three gymnasts to individual event titles at 2009 Big 12 Championship
- Positioned the Sooners in the top 10 on all four events in 2009 in final RQS standings
- Clinched back-to-back Big 12 titles in 2008 and 2009
- Led OU to program-best eighth place finish at 2007 and '08 NCAAAs
- Named 2008 Big 12 Coach of the Year
- Only squad to post undefeated regular season in 2008 (18-0)
- Oklahoma gymnasts earned four All-America honors in 2008
- Guided Sooners to four event titles at 2008 Big 12 Championship
- Led OU to four individual event crowns at '08 Big 12 Championship
- Coached 2008 Big 12 Gymnast of the Year Kiara Redmond
- Led Iowa State to the program's first Super Six in 2006
- Won 2006 Big 12 Championship with Iowa State
- Produced three All-Americans in three seasons (2000, 2005, 2006)
- 2004 and 2006 NCAA Regional Coach of the Year
- Four-time Big 12 Coach of the Year (2004, 2005, 2006, 2008)
- 2005 NACGCW Coach of the Year
- Coached nine NCAA Regional event champions
- Qualified 11 gymnasts for the NCAA individual championships
- Coached 25 Big 12 champions (including three all-arounders)

## WEEK-BY-WEEK RANKINGS

<i>Week</i>	<i>Rank</i>
Preseason	9
Jan. 11	2
Jan. 18	2
Jan. 25	2
Feb. 1	2
Feb. 8	1
Feb. 15	2
Feb. 22	-
March 1	-
March 8	-
March 15	-
March 22	-
March 29	-
April 5	-
April 12	-
Final	-

## COMING FROM BEHIND

OU trailed for the only time after any rotation this season as Illinois opened with a 49.100 on vault, to OU's 49.000 start on bars. The Sooners overtook the Fighting Illini during the next rotation and cruised to their eighth-straight win over Illinois, remaining undefeated in the series and posting the second-largest margin of victory in any meeting between the two programs (+2.255).

## FOLLOWING THE SOONERS

The OU gymnastics program maintains its own Facebook, YouTube and Twitter accounts, which are updated frequently with all of the latest news about the squad. Links to each of those pages can be found at [www.SoonerSports.com](http://www.SoonerSports.com), the official site of the Oklahoma Sooners.

## PRACTICE MAKES PERFECT

If the old adage rings true, the Sooners should be on top of their game in 2010 as the team recently moved into of the top training gyms in the entire country. OU recently completed a state-of-the-art 7,000 square foot addition and a complete overhaul of the existing Sam Viersen Gymnastics Center for the men's and women's gymnastics squads.

Funded entirely by private donations without the use of any state or university appropriated funds, the project included a complete renovation of the current gym, locker rooms, sports medicine training rooms and the awards recognition room. A new storage area, a reconfiguration of foam and resi pits and an outdoor patio also highlighted the renovation.

## STELLAR YEAR IN THE CLASSROOM

Nine OU gymnasts earned 2009 NACGC All-Academic Scholar awards as the Sooners posted their highest GPA since 2004. Oklahoma's nine honorees was third best among teams advancing to last year's NCAA Championship, behind only Alabama (13) and Stanford (10).

## CLOSER LOOK AT OKLAHOMA IN 2010

The back-to-back Big 12 Champions opened the 2010 season ranked ninth in the GymInfo preseason coaches poll, the highest ranking of any conference squad. The Sooners return 11 members from last season's group that clinched OU's second straight conference title.

Headlining OU's returnees is sophomore All-American Megan Ferguson. The Olathe, Kan., native capped off her stellar freshman campaign by garnering All-America status on beam at the 2009 NCAA Championships. She became the first freshman in Big 12 history to win multiple event titles at the conference championship (bars and beam).

Other returnees include All-Big 12 selections in Jackie Flanery (floor - 2008), Melanie Root (vault - 2009), Kristin Smith (floor - 2009) and Hollie Vise (bars - 2008, beam - 2008, 2009). The quartet has combined for nine Big 12 Event Specialist of the Week honors in the past two seasons.

Also returning in 2010 are event title winners Mary Mantle (Big 12 Event Specialist of the Week on Feb. 12, 2008, after her vault win at Denver) and Sara Stone (three vault titles in 2009).

This season also marks the final send-off for Julie Kramer, while other returnees include juniors Candace Cindell and Natalie Ratcliff. Ratcliff was a mainstay in the vault and beam lineup a year ago.

OU gymnastics fans also will have their first chance to see Oklahoma's freshman class of Bethany Neubauer, Kayla Nowak, Brie Olson and Nitya Ramaswami. The class was ranked No. 9 in the country by [CollegeGymFans.com](http://CollegeGymFans.com).

## SEASON BESTS (INDIVIDUAL)

EVENT	SCORE	GYMNAST	DATE
All-Around	39.050	Nowak	1.23
Vault	9.9	Flanery	2.5
Bars	9.925	Vise   Ferguson	2.12
Beam	9.95	Vise   Smith	1.23
Floor	9.95	Smith   Flanery	2.5

## SEASON BESTS (TEAM)

EVENT	SCORE	OPPONENT	DATE
Team	197.259	Iowa State	2.12
Vault	49.375	Nebraska   TWU	2.5
Bars	49.425	Iowa State	2.12
Beam	49.500	Illinois	1.23
Floor	49.600	Nebraska   TWU	2.5

## PROGRAM BESTS (INDIVIDUAL)

EVENT	SCORE	GYMNAST	YEAR
All-Around	39.7	Kasie Tamayo	2004
Vault	10.00	Kiara Redmond	2008
Bars	10.00	Erin LaBarr	2005
Beam	10.00	Kasie Tamayo	2002
Floor	10.00	Patrcia Aoki	2003

## PROGRAM BESTS (TEAM)

EVENT	SCORE	OPPONENT	YEAR
Team	197.725	Arizona	2003
Vault	49.575	Iowa State	2002
Bars	49.550	Arizona	2003
Beam	49.675	Arizona	2003
Floor	49.675	TWU/Centenary	2003

## 2010 ACCOLADES

Jackie Flanery	Big 12 Event Specialist of the Week	1.12
Hollie Vise	Big 12 Event Specialist of the Week	1.26
Megan Ferguson	Big 12 Event Specialist of the Week	2.9
Kristin Smith	Big 12 Event Specialist of the Week	2.16

## 2010 SCORING BREAKDOWN

DATE	MEET	TEAM	TEAM SCORE	VAULT	BAR	BEAM	FLOOR	RANK
1/8	Florida	OU	196.250	48.950	49.175	49.025	49.100	9
		UF	195.275	49.300	48.175	48.875	48.925	4
1/15	@Auburn	OU	196.300	49.050	49.225	49.025	49.000	2
		AU	195.325	48.975	48.950	48.600	48.800	9
1/23	@Illinois	OU	196.650	49.050	49.000	49.500	49.100	2
		ILL	194.425	49.100	47.925	48.350	49.050	25
1/30	@Metroplex	OU	196.100	49.075	49.225	48.600	49.200	2
		NCST	194.875	48.975	48.925	48.000	48.975	NR
		TWU	191.225	48.375	47.500	47.650	47.700	NR
		AA	188.900	47.925	47.900	46.675	46.400	NR
2/5	Nebraska/TWU	OU	196.825	49.375	48.975	48.875	49.600	2
		NU	196.225	49.250	48.600	49.200	49.175	10
		TWU	192.575	48.225	47.500	48.300	48.550	NR
2/12	Iowa State	OU	197.250	49.200	49.425	49.375	49.250	1
		ISU	196.225	49.050	49.000	49.175	49.000	16

**RECORD 9-0 HOME: 4-0 AWAY: 2-0 NEUTRAL: 3-0 BIG 12: 2-0**  
**VS. THE TOP 25: 5-0 VS. THE TOP 10: 3-0**

## 2010 OKLAHOMA TEAM SUPERLATIVES

### TEAM SCORE

1. 197.250.....Iowa State (Feb. 12)
2. 196.825.....Nebraska and TWU (Feb. 5)
3. 196.650.....@ No. 25 Illinois (Jan. 23)

### VAULT

1. 49.375.....Nebraska and TWU (Feb. 5)
2. 49.200.....Iowa State (Feb. 12)
3. 49.075.....@ Metroplex Challenge (Jan. 30)

### BARS

1. 49.425.....Iowa State (Feb. 12)
2. 49.225.....@ Metroplex Challenge (Jan. 30)
- 49.225.....@ No. 9 Auburn (Jan. 15)

### BEAM

1. 49.500.....@ No. 25 Illinois (Jan. 23)
2. 49.375.....Iowa State (Feb. 12)
4. 49.025.....@ No. 9 Auburn (Jan. 15)
- 49.025.....vs. No. 4 Florida (Jan. 8)

### FLOOR

1. 49.600.....Nebraska and TWU (Feb. 5)
2. 49.250.....Iowa State (Feb. 12)
3. 49.200.....@ Metroplex Challenge (Jan. 30)

## 2010 OKLAHOMA INDIVIDUAL SUPERLATIVES

### ALL-AROUND

1. 39.050 .....Kayla Nowak

### VAULT

1. 9.900.....Jackie Flanery
2. 9.875.....Sara Stone
- 9.875.....Jackie Flanery
- 9.875.....Mary Mantle

### BARS

1. 9.925.....Hollie Vise
- 9.925.....Megan Ferguson
3. 9.900.....Hollie Vise

### BEAM

1. 9.950 .....Hollie Vise
- 9.950.....Kristin Smith
3. 9.925.....Hollie Vise
- 9.925.....Megan Ferguson

### FLOOR

1. 9.950.....Jackie Flanery
- 9.950.....Kristin Smith
3. 9.925.....Kayla Nowak
- 9.925.....Kristin Smith
- 9.925.....Hollie Vise

## 2010 OKLAHOMA MEET-BY-MEET LINEUP

FLA	AUB	ILL	METRO	NEB	ISU	MIZZ	MSU	ALA	WASH	ARK	BIG 12
<b>VAULT</b>	<b>VAULT</b>	<b>VAULT</b>	<b>VAULT</b>	<b>VAULT</b>	<b>VAULT</b>	<b>VAULT</b>	<b>VAULT</b>	<b>VAULT</b>	<b>VAULT</b>	<b>VAULT</b>	<b>VAULT</b>
Flanery	Flanery	Flanery	Flanery	Flanery	Flanery						
Stone	Root	Olson	Stone	Root	Ratcliff						
Olson	Olson	Nowak	Olson	Stone	Stone						
Neubauer	Stone	Stone	Kelley	Kelley	Kelley						
Ratcliff	Ratcliff	Ratcliff	Ratcliff	Olson	Olson						
Mantle	Mantle	Mantle	Mantle	Mantle	Mantle						
<b>BARS</b>	<b>BARS</b>	<b>BARS</b>	<b>BARS</b>	<b>BARS</b>	<b>BARS</b>	<b>BARS</b>	<b>BARS</b>	<b>BARS</b>	<b>BARS</b>	<b>BARS</b>	<b>BARS</b>
Flanery	Flanery	Flanery	Flanery	Flanery	Flanery						
Olson	Olson	Olson	Olson	Olson	Olson						
Nowak	Nowak	Nowak	Nowak	Nowak	Nowak						
Ferguson	Ferguson	Ferguson	Ferguson	Ferguson	Ferguson						
Kelley	Kelley	Kelley	Kelley	Kelley	Kelley						
Vise	Vise	Vise	Vise	Vise	Vise						
<b>BEAM</b>	<b>BEAM</b>	<b>BEAM</b>	<b>BEAM</b>	<b>BEAM</b>	<b>BEAM</b>	<b>BEAM</b>	<b>BEAM</b>	<b>BEAM</b>	<b>BEAM</b>	<b>BEAM</b>	<b>BEAM</b>
Ratcliff	Ratcliff	Ratcliff	Ratcliff	Ratcliff	Ratcliff						
Nowak	Nowak	Nowak	Nowak	Nowak	Nowak						
Kelley	Kelley	Kelley	Kelley	Kelley	Kelley						
Ferguson	Ferguson	Ferguson	Ferguson	Ferguson	Smith						
Vise	Vise	Vise	Vise	Vise	Vise						
Smith	Smith	Smith	Smith	Smith	Ferguson						
<b>FLOOR</b>	<b>FLOOR</b>	<b>FLOOR</b>	<b>FLOOR</b>	<b>FLOOR</b>	<b>FLOOR</b>	<b>FLOOR</b>	<b>FLOOR</b>	<b>FLOOR</b>	<b>FLOOR</b>	<b>FLOOR</b>	<b>FLOOR</b>
Mantle	Mantle	Mantle	Mantle	Mantle	Stone						
Ferguson	Ferguson	Ferguson	Ferguson	Ferguson	Ferguson						
Vise	Vise	Vise	Nowak	Nowak	Nowak						
Nowak	Nowak	Nowak	Vise	Vise	Vise						
Smith	Smith	Smith	Smith	Smith	Smith						
Flanery	Flanery	Flanery	Flanery	Flanery	Flanery						

2010 EVENT WINS (TEAM)

EVENT	SCORE	OPPONENT	DATE
Vault (4)	49.200	Iowa State	2.12
	49.375	Nebraska	2.05
	49.075	Metroplex	1.30
	49.050	Auburn	1.15
Bars (6)	49.425	Iowa State	2.12
	48.975	Nebraska	2.05
	49.225	Metroplex	1.30
	49.000	Illinois	1.23
	49.225	Auburn	1.15
	49.175	Florida	1.08
Beam (5)	49.375	Iowa State	2.12
	48.600	Metroplex	1.30
	49.500	Illinois	1.23
	49.025	Auburn	1.15
	49.025	Florida	1.08
Floor (6)	49.250	Iowa State	2.12
	49.600	Nebraska	2.05
	49.200	Metroplex	1.30
	49.100	Illinois	1.23
	49.000	Auburn	1.15
	49.100	Florida	1.08

2010 EVENT WINS (INDIVIDUAL)

NAME (SEASON WINS)	EVENT	OPPONENT
Hollie Vise (11)	Bars	Iowa State
		Nebraska
		Metroplex
		Illinois
		Auburn
	Beam	Iowa State
		Metroplex
		Illinois
		Auburn
		Florida
Jackie Flanery (7)	Vault	Iowa State
		Nebraska
	Bars	Florida
		Metroplex
		Illinois
Natasha Kelley (2)	Bars	Illinois
		Florida
Megan Ferguson (3)	Beam	Iowa State
		Nebraska
		Auburn
Mary Mantle (1)	Vault	Iowa State
Kristin Smith (4)	Floor	Iowa State
		Nebraska
	Beam	Iowa State Illinois

MEET-BY-MEET LEADERS

**FLORIDA - 1.9.2010 | NORMAN**

EVENT	SCORE	GYMNAST
All-Around	-	-
Vault	9.85	Mantle
Bars	9.85	Flanery, Kelley, Vise
Beam	9.9	Vise
Floor	9.875	Flanery

**@AUBURN - 1.15**

EVENT	SCORE	GYMNAST
All-Around	-	-
Vault	9.85	Ratcliff
Bars	9.925	Vise
Beam	9.875	Vise, Ferguson
Floor	9.85	Flanery

**@ILLINOIS - 1.23**

EVENT	SCORE	GYMNAST
All-Around	39.050	Nowak
Vault	9.85	Olson
Bars	9.85	Vise, Kelley
Beam	9.95	Vise, Smith
Floor	9.9	Flanery

**@METROPLEX CHALLENGE - 1.30**

EVENT	SCORE	GYMNAST
All-Around	-	-
Vault	9.875	Stone
Bars	9.925	Vise
Beam	9.925	Vise
Floor	9.95	Flanery

**NEBRASKA/TWU - 2.5**

EVENT	SCORE	GYMNAST
All-Around	-	-
Vault	9.9	Flanery
Bars	9.9	Vise
Beam	9.925	Ferguson
Floor	9.95	Smith

**IOWA STATE - 2.12**

EVENT	SCORE	GYMNAST
All-Around	-	-
Vault	9.875	Mantle, Flanery
Bars	9.925	Vise
Beam	9.9	Vise, Smith, Ferguson
Floor	9.925	Smith

**@MISSOURI - 2.19**

EVENT	SCORE	GYMNAST
All-Around	-	-
Vault	-	-
Bars	-	-
Beam	-	-
Floor	-	-

**@MICHIGAN STATE - 2.26**

EVENT	SCORE	GYMNAST
All-Around	-	-
Vault	-	-
Bars	-	-
Beam	-	-
Floor	-	-

**ALABAMA - 3.5**

EVENT	SCORE	GYMNAST
All-Around	-	-
Vault	-	-
Bars	-	-
Beam	-	-
Floor	-	-

**WASHINGTON - 3.12**

EVENT	SCORE	GYMNAST
All-Around	-	-
Vault	-	-
Bars	-	-
Beam	-	-
Floor	-	-

**@ARKANSAS - 3.19**

EVENT	SCORE	GYMNAST
All-Around	-	-
Vault	-	-
Bars	-	-
Beam	-	-
Floor	-	-

**@BIG 12 CHAMPIONSHIP - 3.27**

EVENT	SCORE	GYMNAST
All-Around	-	-
Vault	-	-
Bars	-	-
Beam	-	-
Floor	-	-

**@NCAA REGIONAL - 4.10**

EVENT	SCORE	GYMNAST
All-Around	-	-
Vault	-	-
Bars	-	-
Beam	-	-
Floor	-	-



CAREER HIGHS

VT	UB	BB	FX
-	-	-	-

SEASON HIGHS

VT	UB	BB	FX
-	-	-	-

**CANDACE CINDELL**

Date	Event	Vault	Bars	Beam	Floor	AA
1.08	Florida	-	-	-	-	-
1.15	@Auburn	-	-	-	-	-
1.23	@Illinois	-	-	-	-	-
1.30	Metroplex Challenge	-	-	-	-	-
2.05	Nebraska/TWU	-	-	-	-	-
2.12	Iowa State	-	-	-	-	-
2.19	@Missouri	-	-	-	-	-
2.26	@Michigan State	-	-	-	-	-
3.05	Alabama	-	-	-	-	-
3.12	Washington	-	-	-	-	-
3.19	@Arkansas	-	-	-	-	-
3.27	Big 12 Championship	-	-	-	-	-
4.10	NCAA Regional	-	-	-	-	-



CAREER HIGHS

VT	UB	BB	FX
-	9.925	9.925	9.9

SEASON HIGHS

VT	UB	BB	FX
-	9.925	9.925	9.9

**MEGAN FERGUSON**

Date	Event	Vault	Bars	Beam	Floor	AA
1.08	Florida	-	9.825	9.875	9.775	-
1.15	@Auburn	-	9.825	9.875	9.825	-
1.23	@Illinois	-	9.750	9.900	9.500	-
1.30	Metroplex Challenge	-	9.825	9.850	9.300	-
2.05	Nebraska/TWU	-	9.750	9.925	9.900	-
2.12	Iowa State	-	9.925	9.900	9.900	-
2.19	@Missouri	-	-	-	-	-
2.26	@Michigan State	-	-	-	-	-
3.05	Alabama	-	-	-	-	-
3.12	Washington	-	-	-	-	-
3.19	@Arkansas	-	-	-	-	-
3.27	Big 12 Championship	-	-	-	-	-
4.10	NCAA Regional	-	-	-	-	-



CAREER HIGHS

VT	UB	BB	FX
9.9	9.85	-	9.95

SEASON HIGHS

VT	UB	BB	FX
9.9	9.85	-	9.95

**JACKIE FLANERY**

Date	Event	Vault	Bars	Beam	Floor	AA
1.08	Florida	9.800	9.850	-	9.875	-
1.15	@Auburn	9.800	9.825	-	9.850	-
1.23	@Illinois	9.825	9.775	-	9.900	-
1.30	Metroplex Challenge	9.700	9.775	-	9.950	-
2.05	Nebraska/TWU	9.900	9.775	-	9.900	-
2.12	Iowa State	9.875	9.825	-	9.750	-
2.19	@Missouri	-	-	-	-	-
2.26	@Michigan State	-	-	-	-	-
3.05	Alabama	-	-	-	-	-
3.12	Washington	-	-	-	-	-
3.19	@Arkansas	-	-	-	-	-
3.27	Big 12 Championship	-	-	-	-	-
4.10	NCAA Regional	-	-	-	-	-



CAREER HIGHS

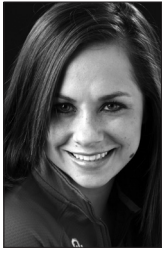
VT	UB	BB	FX
9.875	9.9	9.875	-

SEASON HIGHS

VT	UB	BB	FX
9.875	9.9	9.875	-

**NATASHA KELLEY**

Date	Event	Vault	Bars	Beam	Floor	AA
1.08	Florida	-	9.850	9.850	-	-
1.15	@Auburn	-	9.850	9.775	-	-
1.23	@Illinois	-	9.850	9.850	-	-
1.30	Metroplex Challenge	9.775	9.875	9.725	-	-
2.05	Nebraska/TWU	9.875	9.850	9.875	-	-
2.12	Iowa State	9.850	9.900	9.850	-	-
2.19	@Missouri	-	-	-	-	-
2.26	@Michigan State	-	-	-	-	-
3.05	Alabama	-	-	-	-	-
3.12	Washington	-	-	-	-	-
3.19	@Arkansas	-	-	-	-	-
3.27	Big 12 Championship	-	-	-	-	-
4.10	NCAA Regional	-	-	-	-	-



CAREER HIGHS

VT	UB	BB	FX
-	-	-	-

SEASON HIGHS

VT	UB	BB	FX
-	-	-	-

**JULIE KRAMER**

Date	Event	Vault	Bars	Beam	Floor	AA
1.08	Florida	-	-	-	-	-
1.15	@Auburn	-	-	-	-	-
1.23	@Illinois	-	-	-	-	-
1.30	Metroplex Challenge	-	-	-	-	-
2.05	Nebraska/TWU	-	-	-	-	-
2.12	Iowa State	-	-	-	-	-
2.19	@Missouri	-	-	-	-	-
2.26	@Michigan State	-	-	-	-	-
3.05	Alabama	-	-	-	-	-
3.12	Washington	-	-	-	-	-
3.19	@Arkansas	-	-	-	-	-
3.27	Big 12 Championship	-	-	-	-	-
4.10	NCAA Regional	-	-	-	-	-



CAREER HIGHS

VT	UB	BB	FX
9.9	9.825	-	9.8

SEASON HIGHS

VT	UB	BB	FX
9.875	-	-	9.775

**MARY MANTLE**

Date	Event	Vault	Bars	Beam	Floor	AA
1.08	Florida	9.850	-	-	9.775	-
1.15	@Auburn	9.800	-	-	9.750	-
1.23	@Illinois	9.825	-	-	9.775	-
1.30	Metroplex Challenge	9.850	-	-	9.750	-
2.05	Nebraska/TWU	9.825	-	-	9.425	-
2.12	Iowa State	9.875	-	-	-	-
2.19	@Missouri	-	-	-	-	-
2.26	@Michigan State	-	-	-	-	-
3.05	Alabama	-	-	-	-	-
3.12	Washington	-	-	-	-	-
3.19	@Arkansas	-	-	-	-	-
3.27	Big 12 Championship	-	-	-	-	-
4.10	NCAA Regional	-	-	-	-	-



CAREER HIGHS

VT	UB	BB	FX
9.8	-	-	-

SEASON HIGHS

VT	UB	BB	FX
9.8	-	-	-

**BETHANY NEUBAUER**

Date	Event	Vault	Bars	Beam	Floor	AA
1.08	Florida	9.800	-	-	-	-
1.15	@Auburn	-	-	-	-	-
1.23	@Illinois	-	-	-	-	-
1.30	Metroplex Challenge	-	-	-	-	-
2.05	Nebraska/TWU	-	-	-	-	-
2.12	Iowa State	-	-	-	-	-
2.19	@Missouri	-	-	-	-	-
2.26	@Michigan State	-	-	-	-	-
3.05	Alabama	-	-	-	-	-
3.12	Washington	-	-	-	-	-
3.19	@Arkansas	-	-	-	-	-
3.27	Big 12 Championship	-	-	-	-	-
4.10	NCAA Regional	-	-	-	-	-



CAREER HIGHS

VT	UB	BB	FX	AA
9.75	9.825	9.85	9.925	39.050

SEASON HIGHS

VT	UB	BB	FX	AA
9.75	9.825	9.85	9.925	39.050

**KAYLA NOWAK**

Date	Event	Vault	Bars	Beam	Floor	AA
1.08	Florida	-	9.775	9.700	9.850	-
1.15	@Auburn	-	9.800	9.625	9.750	-
1.23	@Illinois	9.750	9.700	9.850	9.750	39.050
1.30	Metroplex Challenge	-	9.825	9.800	9.775	-
2.05	Nebraska/TWU	-	9.700	9.850	9.925	-
2.12	Iowa State	-	9.825	9.825	9.575	-
2.19	@Missouri	-	-	-	-	-
2.26	@Michigan State	-	-	-	-	-
3.05	Alabama	-	-	-	-	-
3.12	Washington	-	-	-	-	-
3.19	@Arkansas	-	-	-	-	-
3.27	Big 12 Championship	-	-	-	-	-
4.10	NCAA Regional	-	-	-	-	-



CAREER HIGHS

<b>VT</b>	<b>UB</b>	<b>BB</b>	<b>FX</b>
9.85	9.85	-	-

SEASON HIGHS

<b>VT</b>	<b>UB</b>	<b>BB</b>	<b>FX</b>
9.85	9.85	-	-

**BRIË OLSON**

Date	Event	Vault	Bars	Beam	Floor	AA
1.08	Florida	9.750	9.800	-	-	-
1.15	@Auburn	9.775	9.800	-	-	-
1.23	@Illinois	9.850	9.775	-	-	-
1.30	Metroplex Challenge	9.850	9.275	-	-	-
2.05	Nebraska/TWU	9.850	9.625	-	-	-
2.12	Iowa State	9.750	9.850	-	-	-
2.19	@Missouri	-	-	-	-	-
2.26	@Michigan State	-	-	-	-	-
3.05	Alabama	-	-	-	-	-
3.12	Washington	-	-	-	-	-
3.19	@Arkansas	-	-	-	-	-
3.27	Big 12 Championship	-	-	-	-	-
4.10	NCAA Regional	-	-	-	-	-



CAREER HIGHS

<b>VT</b>	<b>UB</b>	<b>BB</b>	<b>FX</b>
-	-	-	-

SEASON HIGHS

<b>VT</b>	<b>UB</b>	<b>BB</b>	<b>FX</b>
-	-	-	-

**NITYA RAMASWAMI**

Date	Event	Vault	Bars	Beam	Floor	AA
1.08	Florida	-	-	-	-	-
1.15	@Auburn	-	-	-	-	-
1.23	@Illinois	-	-	-	-	-
1.30	Metroplex Challenge	-	-	-	-	-
2.05	Nebraska/TWU	-	-	-	-	-
2.12	Iowa State	-	-	-	-	-
2.19	@Missouri	-	-	-	-	-
2.26	@Michigan State	-	-	-	-	-
3.05	Alabama	-	-	-	-	-
3.12	Washington	-	-	-	-	-
3.19	@Arkansas	-	-	-	-	-
3.27	Big 12 Championship	-	-	-	-	-
4.10	NCAA Regional	-	-	-	-	-



CAREER HIGHS

<b>VT</b>	<b>UB</b>	<b>BB</b>	<b>FX</b>
9.85	-	9.875	-

SEASON HIGHS

<b>VT</b>	<b>UB</b>	<b>BB</b>	<b>FX</b>
9.85	-	9.85	-

**NATALIE RATCLIFF**

Date	Event	Vault	Bars	Beam	Floor	AA
1.08	Florida	9.750	-	9.675	-	-
1.15	@Auburn	9.850	-	9.725	-	-
1.23	@Illinois	9.725	-	9.325	-	-
1.30	Metroplex Challenge	9.725	-	9.275	-	-
2.05	Nebraska/TWU	-	-	9.850	-	-
2.12	Iowa State	9.750	-	9.275	-	-
2.19	@Missouri	-	-	-	-	-
2.26	@Michigan State	-	-	-	-	-
3.05	Alabama	-	-	-	-	-
3.12	Washington	-	-	-	-	-
3.19	@Arkansas	-	-	-	-	-
3.27	Big 12 Championship	-	-	-	-	-
4.10	NCAA Regional	-	-	-	-	-



CAREER HIGHS

<b>VT</b>	<b>UB</b>	<b>BB</b>	<b>FX</b>
9.9	9.875	-	9.75

SEASON HIGHS

<b>VT</b>	<b>UB</b>	<b>BB</b>	<b>FX</b>
9.85	-	-	-

**MELANIE ROOT**

Date	Event	Vault	Bars	Beam	Floor	AA
1.08	Florida	-	-	-	-	-
1.15	@Auburn	9.700	-	-	-	-
1.23	@Illinois	-	-	-	-	-
1.30	Metroplex Challenge	-	-	-	-	-
2.05	Nebraska/TWU	9.850	-	-	-	-
2.12	Iowa State	-	-	-	-	-
2.19	@Missouri	-	-	-	-	-
2.26	@Michigan State	-	-	-	-	-
3.05	Alabama	-	-	-	-	-
3.12	Washington	-	-	-	-	-
3.19	@Arkansas	-	-	-	-	-
3.27	Big 12 Championship	-	-	-	-	-
4.10	NCAA Regional	-	-	-	-	-



CAREER HIGHS

<b>VT</b>	<b>UB</b>	<b>BB</b>	<b>FX</b>
-	-	9.95	9.95

SEASON HIGHS

<b>VT</b>	<b>UB</b>	<b>BB</b>	<b>FX</b>
-	-	9.95	9.95

**KRISTIN SMITH**

Date	Event	Vault	Bars	Beam	Floor	AA
1.08	Florida	-	-	9.750	9.275	-
1.15	@Auburn	-	-	9.775	9.825	-
1.23	@Illinois	-	-	9.950	9.850	-
1.30	Metroplex Challenge	-	-	9.300	9.850	-
2.05	Nebraska/TWU	-	-	9.375	9.950	-
2.12	Iowa State	-	-	9.900	9.925	-
2.19	@Missouri	-	-	-	-	-
2.26	@Michigan State	-	-	-	-	-
3.05	Alabama	-	-	-	-	-
3.12	Washington	-	-	-	-	-
3.19	@Arkansas	-	-	-	-	-
3.27	Big 12 Championship	-	-	-	-	-
4.10	NCAA Regional	-	-	-	-	-



CAREER HIGHS

<b>VT</b>	<b>UB</b>	<b>BB</b>	<b>FX</b>
9.9	-	-	9.85

SEASON HIGHS

<b>VT</b>	<b>UB</b>	<b>BB</b>	<b>FX</b>
9.875	-	-	9.85

**SARA STONE**

Date	Event	Vault	Bars	Beam	Floor	AA
1.08	Florida	9.700	-	-	-	-
1.15	@Auburn	9.825	-	-	-	-
1.23	@Illinois	9.800	-	-	-	-
1.30	Metroplex Challenge	9.875	-	-	-	-
2.05	Nebraska/TWU	9.875	-	-	-	-
2.12	Iowa State	9.875	-	-	9.850	-
2.19	@Missouri	-	-	-	-	-
2.26	@Michigan State	-	-	-	-	-
3.05	Alabama	-	-	-	-	-
3.12	Washington	-	-	-	-	-
3.19	@Arkansas	-	-	-	-	-
3.27	Big 12 Championship	-	-	-	-	-
4.10	NCAA Regional	-	-	-	-	-



CAREER HIGHS

<b>VT</b>	<b>UB</b>	<b>BB</b>	<b>FX</b>
-	9.925	9.95	9.925

SEASON HIGHS

<b>VT</b>	<b>UB</b>	<b>BB</b>	<b>FX</b>
-	9.925	9.95	9.925

**HOLLIE VISE**

Date	Event	Vault	Bars	Beam	Floor	AA
1.08	Florida	-	9.850	9.900	9.825	-
1.15	@Auburn	-	9.925	9.875	9.700	-
1.23	@Illinois	-	9.850	9.950	9.825	-
1.30	Metroplex Challenge	-	9.925	9.925	9.875	-
2.05	Nebraska/TWU	-	9.900	9.325	9.925	-
2.12	Iowa State	-	9.925	9.900	9.825	-
2.19	@Missouri	-	-	-	-	-
2.26	@Michigan State	-	-	-	-	-
3.05	Alabama	-	-	-	-	-
3.12	Washington	-	-	-	-	-
3.19	@Arkansas	-	-	-	-	-
3.27	Big 12 Championship	-	-	-	-	-
4.10	NCAA Regional	-	-	-	-	-

## 2010 MEET-BY-MEET RECAPS

### WEEK 1 - FLORIDA | JAN. 8, 2010

**NORMAN, Okla.** -- The No. 9 Oklahoma women's gymnastics squad led wire-to-wire in a 196.250-195.275 upset over fourth-ranked Florida in the Sooners' season opener on Friday in front of 1,325 fans at Lloyd Noble Center.

The victory over the Gators marked the highest-ranked opponent that OU has toppled under fourth-year head coach K.J. Kindler.

The Sooners improved to 23-2 in home meets under Kindler behind strong performances from veterans and newcomers alike, as Oklahoma picked up event titles on bars, beam and floor. OU also claimed individual event titles on each of those events as well, as Jackie Flanery (bars and floor), Hollie Vise (bars and beam) and Natasha Kelley (bars) claimed individual honors.

"This team (OU) came out with a whole other confidence that I've never seen before," said Kindler. "They didn't waiver when the door was opening, they didn't hesitate and they jumped in feet first. I was really impressed with that more than anything. They had a lot of confidence tonight."

OU opened the meet with a 48.950 on vault, paced by Mary Mantle's 9.85 from the anchor position. Mantle placed third in the individual standings on the apparatus, behind a pair of 9.875s from UF's Ashanee Dickerson and Maranda Smith. Flanery posted a 9.8 from the first spot, while freshman Bethany Neubauer matched Flanery's score in her first collegiate routine. Oklahoma took the early lead as Florida was forced to count a fall on bars (48.175).

The Sooners increased their lead to 98.125-97.425 through two rotations after a stellar bars set that resulted in the team event title. Flanery, Kelley and Vise all scored 9.85s to sweep the individual event honors for OU. Flanery's bar set marked a career best, while Kelley competed despite suffering a complete ACL tear less than two months ago. Reigning Big 12 bars co-champion Megan Ferguson tallied a 9.825, while Brie Olson scored a 9.8 in her collegiate debut.

Vise picked up her second individual victory of the night on beam (9.9), leading Oklahoma to its second event win of the evening. OU outscored the Gators 49.025-48.875 on the apparatus, as Ferguson (9.875) and Kelley (9.8) both posted solid routines.

The Sooners sealed the meet victory with an event-winning floor score of 49.100 - their third straight score of 49.000-plus on the night. Flanery picked up her second event title of the night (9.875), freshman Kayla Nowak (9.85) shared second in her debut, while Vise scored a 9.825 in her first collegiate routine on the apparatus.

"We hit 23-of-24 routines which is phenomenal for your first competition," said Kindler. "Now, there are always things we can do to improve, but I thought overall it was an excellent first meet. The freshmen and Natasha were phenomenal. They hit eight routines, out of eight, and were some of our highest scores. They definitely brought a level of confidence to our team.

Oklahoma improved to 42-6 in the regular season under Kindler.

V A U L T	1	Jackie Flanery	102	9.80	9.80				9.800
	2	Sara Stone	113	9.70	9.70				9.700
	3	Brie Olson	108	9.75	9.75				9.750
	4	Bethany Neubauer	106	9.75	9.85				9.800
	5	Natalie Ratcliff	110	9.75	9.75				9.750
	6	Mary Mantle	105	9.85	9.85				9.850

Vault Score: 48.950      Running Score: 48.950

B A R S	1	Jackie Flanery	102	9.85	9.85				9.850
	2	Brie Olson	108	9.80	9.80				9.800
	3	Kayla Nowak	107	9.80	9.75				9.775
	4	Megan Ferguson	101	9.85	9.80				9.825
	5	Natasha Kelley	103	9.90	9.80				9.850
	6	Hollie Vise	114	9.85	9.85				9.850

Bars Score: 49.175      Running Score: 98.125

B E A M	1	Natalie Ratcliff	110	9.70	9.65				9.675
	2	Kayla Nowak	107	9.65	9.75				9.700
	3	Natasha Kelley	103	9.85	9.75				9.800
	4	Megan Ferguson	101	9.90	9.85				9.875
	5	Hollie Vise	114	9.85	9.95				9.900
	6	Kristin Smith	112	9.80	9.70				9.750

Beam Score: 49.025      Running Score: 147.150

F L O O R	1	Mary Mantle	105	9.80	9.75				9.775
	2	Megan Ferguson	101	9.75	9.80				9.775
	3	Hollie Vise	114	9.85	9.80				9.825
	4	Kayla Nowak	107	9.85	9.85				9.850
	5	Kristin Smith	112	9.25	9.30				9.275
	6	Jackie Flanery	102	9.90	9.85				9.875

Floor Score: 49.100      Running Score: 196.250

Final Team Score: 196.250

#### All-Arounders

VT									
UB									
BB									
FX									
AA									

## 2010 MEET-BY-MEET RECAPS

### WEEK 2 - AUBURN | JAN. 15, 2010

**AUBURN, Ala.** -- The No. 2 Oklahoma women's gymnastics squad (2-0, 0-0 Big 12) posted its second straight win over an SEC opponent with a 196.300-195.325 victory at Auburn (0-2, 0-1 SEC) on Friday.

OU led wire-to-wire for the second straight meet, quieting the 5,750 hometown fans inside Beard-Eaves-Memorial Coliseum.

The Sooners hit 24-of-24 routines en route to a sweep of all four event titles, as Oklahoma broke the 49.000-point barrier on every apparatus. Individually, Hollie Vise (bars-9.925, beam-9.875), Megan Ferguson (beam-9.875) and Jackie Flanery (floor-9.85) won event titles.

"It is very exciting to be on the road for the first time and see how tough you are, in particular because our warm up was not one without a couple of hiccups," said head coach K.J. Kindler. "I felt that they really regrouped and got their heads together. I'm very proud of how they performed. We were solid throughout, but the girls realize there is so much room for improvement which is the exciting part."

OU improved to 43-6 in the regular season under Kindler, including back-to-back victories over top-10 opponents to open the 2010 campaign, without an all-arounder in the lineup for the second straight meet.

Oklahoma opened the dual meet with a season-high 49.225 on bars, capped off by Vise's career-high 9.925 from the anchor position that sealed the individual and event win on the apparatus. OU was consistent throughout the entire lineup, as all six Sooners in the bars rotation scored a 9.8 or higher. Natasha Kelley matched her score from last week's win over Florida (9.85), while Jackie Flanery and Ferguson both tallied 9.825s.

OU's uneven bars score was its highest since its last regular season venture into SEC territory, when the Sooners posted a season-high 49.250 at Alabama on March 13, 2009.

The Sooners won the vault title with their second consecutive season high to start the meet. Oklahoma posted a team tally of 49.050 on the apparatus, paced by Natalie Ratcliff's 9.85. Sara Stone (9.825), Jackie Flanery (9.8) and Mary Mantle (9.8) all broke the 9.8 barrier. Melanie Root was a last minute replacement in the lineup and posted a 9.7.

Flanery led the Sooners with a 9.85 on floor from the anchor position as Oklahoma scored a 49.000 on the event. Ferguson and Kristin Smith both notched 9.825, season best's for each.

OU clinched the win with a team score of 49.025 on beam. The Sooners recorded a pair of 9.875s from Ferguson, the reigning Big 12 beam champion and 2009 All-American, and Vise.

"I thought we showed a lot of strength, particularly on bars," said Kindler. "Getting off to the start that we did was vital on the road."

Friday's victory over the Tigers was Oklahoma's third straight over AU and evened the all-time series at four apiece. Through two meets, Oklahoma has won 14 of a possible 16 combined team and individual event titles.

Name		1	2	3	4	ND	AVG
1 Jacqueline Flanery	122	9.75	9.85				9.800
2 Melanie Root	131	9.70	9.70				9.700
3 Brie Olson	128	9.75	9.80				9.775
4 Sara Stone	133	9.85	9.80				9.825
5 Natalie Ratcliff	130	9.85	9.85				9.850
6 Mary Mantle	125	9.80	9.80				9.800

Vault Score: **49.050**

Running Score: **98.275**

1 Jacqueline Flanery	122	9.85	9.80				9.825
2 Brie Olson	128	9.80	9.80				9.800
3 Kayla Nowak	127	9.80	9.80				9.800
4 Megan Ferguson	121	9.85	9.80				9.825
5 Natasha Kelley	123	9.85	9.85				9.850
6 Hollie Vise	134	9.90	9.95				9.925

Bars Score: **49.225**

Running Score: **49.225**

1 Natalie Ratcliff	130	9.70	9.75				9.725
2 Kayla Nowak	127	9.60	9.65				9.625
3 Natasha Kelley	123	9.70	9.85				9.775
4 Megan Ferguson	121	9.85	9.90				9.875
5 Hollie Vise	134	9.90	9.85				9.875
6 Kristin Smith	132	9.75	9.80				9.775

Beam Score: **49.025**

Running Score: **196.300**

1 Mary Mantle	125	9.80	9.70				9.750
2 Megan Ferguson	121	9.85	9.80				9.825
3 Hollie Vise	134	9.65	9.75				9.700
4 Kayla Nowak	127	9.80	9.70				9.750
5 Kristin Smith	132	9.85	9.80				9.825
6 Jacqueline Flanery	122	9.85	9.85				9.850

Floor Score: **49.000**

Running Score: **147.275**

Video Review

Final Score: **196.300**

All Arounders


## 2010 MEET-BY-MEET RECAPS

### WEEK 3 - ILLINOIS | JAN. 23, 2010

**CHAMPAIGN, ILL.** - The second-ranked University of Oklahoma women's gymnastics squad improved to 3-0 on the year with a 196.650-194.425 win at No. 25 Illinois (3-3) on Saturday in Champaign, Ill. The Sooners improved to 7-0 all-time against the Fighting Illini, while tonight's +2.225 margin of victory was the second largest in the series.

OU won team titles in its final three events, including a season-high 49.500 on beam en route to its best team score since Feb. 27, 2009. The Sooners sealed the win with a pair of 9.95s on the apparatus from Hollie Vise and Kristin Smith in Oklahoma's final two routines of the evening.

"Instead of thinking about how they can stay on the equipment, I think we have adjusted the mindset to thinking about how confident they are and how they can nail their routine," said fourth-year head coach K.J. Kindler on OU's beam squad. "I was really encouraged by their mental strength on beam. Natalie (Ratcliff) is a phenomenal beam worker, but she missed tonight. The rest of the lineup rallied and wasn't going to give it away, which is very encouraging."

Freshman Kayla Nowak finished second in the all-around with a 39.050 in her first collegiate all-around performance, marking the first time this season the Sooners have had a gymnast compete all four events.

OU opened the dual meet with a team tally of 49.000 on the uneven bars in the event win. Ranked first in the nation on the apparatus entering the weekend, the Sooners hit six-of-six routines, paced by 9.85s from event winners Natasha Kelley and Vise. Jackie Flanery and Brie Olson both scored 9.775s on the apparatus for a share of third place. OU trailed after a rotation for the first time this season as Illinois scored a 49.100 on vault.

The Sooners posted four scores of 9.8 or higher on vault for a 49.050 team tally. Brie Olson led the way with a career-high 9.85 and a share of second in the individual standings. Jackie Flanery and Mary Mantle each scored a 9.825, while Sara Stone posted a 9.8.

Oklahoma overtook the Fighting Illini 98.050-97.025 at the midway point after the home squad was forced to count a fall on bars.

Flanery (9.9), Smith (9.85) Vise (9.825) and Mary Mantle (9.775) all posted season bests on floor en route to a team score of 49.100 on the apparatus. Flanery won her third-straight event title on the apparatus this season, while Smith and Vise finished third and fifth, respectively.

The Sooners posted their highest beam score in 14 meets (49.500) after reeling off five straight 9.85s or better after a fall from the first position. Vise and Smith shared event honors with 9.95s, while Ferguson (9.9), Kelley (9.85) and Nowak (9.85) completed a sweep of the individual event standings on the apparatus.

"I thought we came out a bit lethargic and really didn't stick any landings on vault or bars, where we entered the meet with a goal of hitting at least 50-percent of those routines," said Kindler. "We finally started gaining some momentum on floor, where I felt that Mary (Mantle), Hollie (Vise), Kristin (Smith) and Jackie (Flanery) all performed their best routines of the season."

Name		1	2	3	4	ND	AVG
1 Jacqueline Flanery	203	9.80	9.85				9.825
2 Brie Olson	209	9.85	9.85				9.850
3 Kayla Nowak	208	9.70	9.80				9.750
4 Sara Stone	214	9.85	9.75				9.800
5 Natalie Ratcliff	211	9.65	9.80				9.725
6 Mary Mantle	206	9.80	9.85				9.825

Vault Score: **49.050**

Running Score: **98.050**

1 Jacqueline Flanery	203	9.75	9.80				9.775
2 Brie Olson	209	9.80	9.75				9.775
3 Kayla Nowak	208	9.75	9.65				9.700
4 Megan Ferguson	202	9.70	9.80				9.750
5 Natasha Kelley	204	9.85	9.85				9.850
6 Hollie Vise	215	9.85	9.85				9.850

Bars Score: **49.000**

Running Score: **49.000**

1 Natalie Ratcliff	211	9.30	9.35				9.325
2 Kayla Nowak	208	9.85	9.85				9.850
3 Natasha Kelley	204	9.90	9.80				9.850
4 Megan Ferguson	202	9.90	9.90				9.900
5 Hollie Vise	215	9.95	9.95				9.950
6 Kristin Smith	213	9.95	9.95				9.950

Beam Score: **49.500**

Running Score: **196.650**

1 Mary Mantle	206	9.70	9.85				9.775
2 Megan Ferguson	202	9.55	9.65			0.10	9.500
3 Hollie Vise	215	9.80	9.85				9.825
4 Kayla Nowak	208	9.85	9.65				9.750
5 Kristin Smith	213	9.80	9.90				9.850
6 Jacqueline Flanery	203	9.90	9.90				9.900

Floor Score: **49.100**

Running Score: **147.150**

Video Review

Final Score: **196.650**

#### All Arounders

Nowak						
9.750						
9.700						
9.850						
9.750						
39.050						

## 2010 MEET-BY-MEET RECAPS

### WEEK 4 - METROPLEX CHALLENGE | JAN. 30, 2010

**DALLAS** - The second-ranked University of Oklahoma women's gymnastics squad improved to 6-0 on the season with a quad meet win over Alaska-Anchorage, N.C. State and TWU at the 2010 Metroplex Challenge in Dallas on Saturday.

OU swept all four team event titles and improved to 47-6 in the regular season under fourth-year head coach K.J. Kindler after individual titles on bars (Hollie Vise – 9.925), beam (Vise – 9.925) and floor (Jackie Flanery – 9.95).

The Sooners were forced to count their first fall of the season on any apparatus with a pair of falls on beam, resulting in a season-low team score of 196.100. N.C. State (194.875) placed second, TWU (191.225) third and Alaska-Anchorage rounded out the quad meet in fourth (188.9).

"We had more mistakes tonight than we have had all year long, but we know mistakes are going to happen," said Kindler. "Kayla (Nowak), as a freshman, followed every single mistake on the three events we had and wow... turned it up a notch. That is impressive to see a freshman follow up a mistake and handle it the way she did. It was very mature and it was exciting to see.

"I think our team, since they haven't been put in that situation this year, handled it well. Obviously, we're looking for a better result. We'll look to up our game next week."

Oklahoma opened the meet with a season-high 49.075 on vault, paced by Sara Stone's season-high 9.875 that garnered individual event honors for the sophomore. OU received a pair of 9.85s from Brie Olson and Mary Mantle. Olson's routine matched last week's career high on the apparatus, while Mantle tied her season best performance. Natasha Kelley made her collegiate debut on vault and scored a 9.775, just two months after the Katy, Texas, native suffered a complete tear of her right ACL.

The Sooners matched their season high on bars with a 49.225 team tally, capped off by Vise's second-straight 9.925 on the apparatus in the individual win. OU survived a scare after freshman Brie Olson fell on her mount in the squad's second routine on bars, posting four straight routines of 9.825 or higher to close the rotation. The Sooners tallied a pair of 9.825s from Nowak and reigning Big 12 bars champ Megan Ferguson, while Kelley scored a 9.875 prior to Vise's routine from the anchor position.

OU counted its first fall of the season after slip-up's from Natalie Ratcliff and Kristin Smith in the first and last routines on beam, respectively. Oklahoma posted a season-low 48.600 on the apparatus, marking its first sub-49 score on beam this season. Vise paced the Sooners with her second 9.925 of the night, also resulting in her second event honor. Ferguson tallied a 9.85, while Nowak had a 9.8.

Flanery received a 10.00 from one floor judge en route to a 9.95 on the apparatus in the event win. Vise continued her spectacular night with a career-high 9.875 on the apparatus, while Smith rebounded from her fall on beam to score a 9.85.

2010 MEET-BY-MEET RECAPS  
**WEEK 5 - NEBRASKA AND TWU | FEB. 5, 2010**

**NORMAN, Okla.** - The second-ranked OU women's gymnastics squad remained undefeated on the year (8-0, 1-0 Big 12) with a wire-to-wire triangular victory over No. 10 Nebraska (6-1) and TWU (3-5) in front of 1,405 fans at Lloyd Noble Center on Friday.

The Sooners scored a season-high 196.825 despite counting a fall on beam, outdistancing Big 12 rival Nebraska and TWU, who posted scores of 196.225 and 192.575, respectively.

OU won team event titles on vault, bars and floor and swept all four individual titles with event wins on vault (Jackie Flanery - tied with a 9.9), bars (Hollie Vise - 9.9), beam (Megan Ferguson - 9.925) and floor (Kristin Smith - 9.95).

The Sooners didn't compete an all-arounder for the fourth meet this season, while a different OU gymnast led the team on each event.

Oklahoma had to outmatch a Husker squad that also posted a season high team tally on Friday and the result was in question until the final routine. After counting a fall on beam that tightened the team standings, OU closed the meet with a season-high 49.600 on floor, marking the Sooners highest event total under fourth-year head coach K.J. Kindler.

Oklahoma opened with a season-high 49.375 on vault, easily eclipsing its previous high of 49.075 at last week's Metroplex Challenge. Flanery (9.9), Natasha Kelley (9.875) and Brie Olson (9.875) set career highs, while Melanie Root (9.85) and Sara Stone (9.875) posted season bests. Mary Mantle turned in a 9.825 from the anchor position as the entire Sooner vault lineup scored at least a 9.825.

"I really thought that vault and floor were some of our best performances of the year," said Kindler. "In particular, on vault the way we started out with Jackie Flanery. That was actually our best vault in the lineup and she nailed it. It was a great start for our team on that event. We kind of got on a roll from that."

The Sooners started a bit slow on bars, before Kelley and Vise capped off the rotation with scores of 9.85 and 9.9, respectively. It was Vise's fifth straight win on the apparatus dating back to Oklahoma's season opener against Florida. OU posted a 48.975 on the apparatus, marking the first time this season the Sooners haven't scored a 49-plus on the event.

Ferguson (9.925) and Kelley (9.875) finished one-two in the individual standings on beam, but the Sooners were forced to count their second straight fall on the apparatus. From the start, it appeared that OU would post one of its higher scores on beam this year after Natalie Ratcliff and Kayla Nowak preceded Ferguson and Kelley with a pair of 9.85s, but both Vise and Kristin Smith fell in the final two routines for a team score of 48.875.

The Sooners swept the podium on floor, closing the rotation with five straight scores of 9.9 or higher. Oklahoma picked up career highs from Smith (9.95), Nowak (9.925), Vise (9.925), Ferguson (9.9), while Flanery sealed the win with a 9.9 in the final routine of the night.

Name		1	2	3	4	nd	AVE
V A U L T	1 Jackie Flanery 102	9.85	9.95				9.900
	2 Melanie Root 111	9.80	9.90				9.850
	3 Sara Stone 113	9.85	9.90				9.875
	4 Natasha Kelley 103	9.80	9.95				9.875
	5 Brie Olson 108	9.85	9.90				9.875
	6 Mary Mantle 105	9.80	9.85				9.825

Vault Score: 49.375      Running Score: 49.375

B A R S	1 Jackie Flanery 102	9.80	9.75				9.775
	2 Brie Olson 108	9.60	9.65				9.625
	3 Kayla Nowak 107	9.70	9.70				9.700
	4 Megan Ferguson 101	9.75	9.75				9.750
	5 Natasha Kelley 103	9.85	9.85				9.850
	6 Hollie Vise 114	9.90	9.90				9.900

Bars Score: 48.975      Running Score: 98.350

B E A M	1 Natalie Ratcliff 110	9.80	9.90				9.850
	2 Kayla Nowak 107	9.85	9.85				9.850
	3 Natasha Kelley 103	9.85	9.90				9.875
	4 Megan Ferguson 101	9.95	9.90				9.925
	5 Hollie Vise 114	9.35	9.30				9.325
	6 Kristin Smith 112	9.40	9.35				9.375

Beam Score: 48.875      Running Score: 147.225

F L O O R	1 Mary Mantle 105	9.55	9.50			-0.1	9.425
	2 Megan Ferguson 101	9.90	9.90				9.900
	3 Kayla Nowak 107	9.90	9.95				9.925
	4 Hollie Vise 114	9.95	9.90				9.925
	5 Kristin Smith 112	9.95	9.95				9.950
	6 Jackie Flanery 102	9.90	9.90				9.900

Floor Score: 49.600      Running Score: 196.825

Final Team Score: **196.825**

**All-Arounders**

VT							
UB							
BB							
FX							
AA							

## 2010 MEET-BY-MEET RECAPS

### WEEK 6 - IOWA STATE | FEB. 12, 2010

**NORMAN, Okla.** - The University of Oklahoma women's gymnastics program ascended to No. 1 in the country for the first time in program history on Monday and proved why on Friday.

The top-ranked Sooners (9-0, 2-0 Big 12) led wire-to-wire in a 197.250-196.225 victory over No. 16 Iowa State (4-5, 0-2 Big 12) in front of 1,777 fans at Lloyd Noble Center in OU's "Beauty and the Beast" spectacular. The gymnasts shared the floor with the ninth-ranked OU wrestling squad, who improved to 13-1-1 with a 33-3 victory over the visiting Chattanooga Mocs.

"We talked about having intensity from the very beginning and I felt like we definitely came out that way," said head coach K.J. Kindler. "We definitely had our best bar performances of the year, sticking dismounts, hitting those angles and really being detail-oriented."

The Sooners improved to 26-2 in their last 28 home events by sweeping all eight team and individual event honors en route to their highest team tally under Kindler, who improved to 8-0 versus her former squad since she took the OU head coaching position in 2007.

Individually, Jackie Flanery posted her second straight vault title despite serving as OU's leadoff gymnast in the rotation, sharing event honors with anchor Mary Mantle. Hollie Vise remained perfect on the season on bars with her sixth straight win in a tie with Big 12 bars champion Megan Ferguson. Ferguson, Vise and Kristin Smith all shared the event win on beam, while Smith took home her second straight floor title.

Opening the dual meet on vault, Oklahoma opened and closed the rotation with event winning 9.875s from Flanery and Mantle. Paced by the senior duo's shared event title, the Sooners turned in a team tally score of 49.200 to open the dual meet with the event win, as Sara Stone and Natasha Kelley also turned in solid routines with a pair of 9.85s.

OU posted six straight scores of 9.825 or higher on bars and took its second event title of the night with a season-high score of 49.425. It was a full 0.2 of a point higher than any other Oklahoma team score on the apparatus in 2010. The Sooners swept the bars podium behind 9.925s from Vise and Ferguson for the event win, while Kelley (9.9), Brie Olson (9.85), Flanery (9.825) and Kayla Nowak (9.825) were right on their heels.

Oklahoma survived a scare after a fall from the first position on beam with five straight scores of 9.825 or higher. Nowak and Kelley posted routines of 9.825 and 9.85, respectively, while Smith, Vise and Ferguson closed the rotation with back-to-back-to-back 9.9s. The Sooners scored a 49.375 on the apparatus to take a 148.000-147.050 lead into the final event.

The Sooners clinched their highest score since posting a 197.300 in 2004 with a 49.250 on floor. Smith won her second event honor of the night with a 9.925, while Ferguson notched a 9.9. Stone posted a 9.85 in her season debut on floor and Vise was solid with a 9.825.

Oklahoma improved to 41-14-1 in the all-time series against the Cyclones which dates back to 1981.

Name		1	2	3	4	nd	AVE
V A U L T	1 Jackie Flanery 102	9.90	9.85				9.875
	2 Natalie Ratcliff 110	9.80	9.70				9.750
	3 Sara Stone 113	9.85	9.85				9.850
	4 Natasha Kelley 103	9.85	9.85				9.850
	5 Brie Olson 108	9.75	9.75				9.750
	6 Mary Mantle 105	9.90	9.85				9.875

Vault Score: 49.200      Running Score: 49.200

B A R S	1 Jackie Flanery 102	9.85	9.80				9.825
	2 Brie Olson 108	9.85	9.85				9.850
	3 Kayla Nowak 107	9.85	9.80				9.825
	4 Megan Ferguson 101	9.90	9.95				9.925
	5 Natasha Kelley 103	9.90	9.90				9.900
	6 Hollie Vise 114	9.90	9.95				9.925

Bars Score: 49.425      Running Score: 98.625

B E A M	1 Natalie Ratcliff 110	9.40	9.15				9.275
	2 Kayla Nowak 107	9.80	9.85				9.825
	3 Natasha Kelley 103	9.85	9.85				9.850
	4 Kristin Smith 112	9.90	9.90				9.900
	5 Hollie Vise 114	9.95	9.85				9.900
	6 Megan Ferguson 101	9.85	9.95				9.900

Beam Score: 49.375      Running Score: 148.000

F L O O R	1 Sara Stone 113	9.85	9.85				9.850
	2 Megan Ferguson 101	9.90	9.90				9.900
	3 Kayla Nowak 107	9.50	9.65				9.575
	4 Hollie Vise 114	9.85	9.80				9.825
	5 Kristin Smith 112	9.90	9.95				9.925
	6 Jackie Flanery 102	9.90	9.80			-0.1	9.750

Floor Score: 49.250      Running Score: 197.250

Final Team Score: 197.250

#### All-Arounders

VT							
UB							
BB							
FX							
AA							